



KCA Laboratories
232 North Plaza Drive
Nicholasville, KY 40356

(833) 522-5227
https://kcalabs.com
KDA Lic.# P_0058

Certificate of Analysis

ZM10192020

Sample ID: 2010KCA0561.1760
Cultivar: N/A
Matrix: Concentrates & Extracts
Type: Other
Sample Size:

Received: 10/23/2020
Completed: 10/29/2020
Batch#: N/A

Client
Happy Buddha Hemp
112 W. Bridge St
Hotchkiss, CO 81419
(970) 710-1840
Lic. #405R-00016.23



Summary

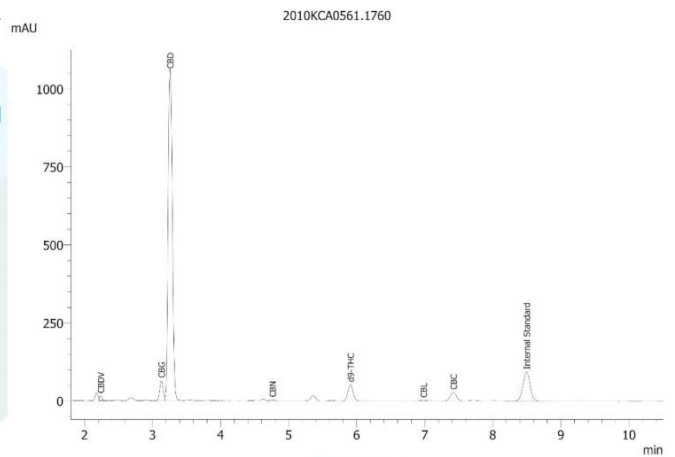
Test	Date Tested	Result
Cannabinoids	10/27/2020	Complete
Microbials	10/29/2020	Complete
Mycotoxins	10/26/2020	Complete
Pesticides	10/26/2020	Complete
Heavy Metals	10/26/2020	Complete

Cannabinoids by HPLC-PDA

Complete

2.7563%	70.0297%	77.0537%	NT <i>Not Tested</i>	Not Tested
Total THC	Total CBD	Total Cannabinoids	Moisture Content	Foreign Matter

Analyte	LOD	LOQ	Result	Result
	%	%	%	mg/g
CBC	0.0095	0.0284	1.5119	15.119
CBCA	0.0181	0.0543	ND	ND
CBCV	0.0060	0.0180	ND	ND
CBD	0.0081	0.0242	70.0297	700.297
CBDA	0.0043	0.0130	ND	ND
CBDV	0.0061	0.0182	0.3925	3.925
CBDVA	0.0021	0.0063	ND	ND
CBG	0.0057	0.0172	2.1657	21.657
CBGA	0.0049	0.0147	ND	ND
CBL	0.0112	0.0335	0.1079	1.079
CBLA	0.0124	0.0371	ND	ND
CBN	0.0056	0.0169	0.0897	0.897
CBNA	0.0060	0.0181	ND	ND
Δ8-THC	0.0104	0.0312	ND	ND
Δ9-THC	0.0076	0.0227	2.7563	27.563
THCA	0.0084	0.0251	ND	ND
THCV	0.0069	0.0206	ND	ND
THCVA	0.0062	0.0186	ND	ND
Total THC			2.7563	27.563
Total CBD			70.0297	700.297
Total			77.0537	770.537



Total THC = THCA * 0.877 + Δ9-THC
Total CBD = CBDA * 0.877 + CBD
LOD = Limit of Detection
LOQ = Limit of Quantitation
ND = None Detected

For plant material, the reported result is based on a sample weight with the applicable moisture content for that sample.

Wes Rogers

Wes Rogers
Principal Scientist
10/29/2020

This product or substance has been tested by KCA Laboratories using validated testing methodologies and a quality system. Values reported relate only to the product or substance tested. KCA Laboratories makes no claims as to the efficacy, safety or other risks associated with any detected or non-detected amounts of any substances reported herein. This Certificate of Analysis shall not be reproduced except in full, without the written approval of KCA Laboratories.



KCA Laboratories
232 North Plaza Drive
Nicholasville, KY 40356

(833) 522-5227
<https://kcalabs.com>
KDA Lic.# P_0058

Certificate of Analysis

ZM10192020

Sample ID: 2010KCA0561.1760
Cultivar: N/A
Matrix: Concentrates & Extracts
Type: Other
Sample Size:

Received: 10/23/2020
Completed: 10/29/2020
Batch#: N/A

Client
Happy Buddha Hemp
112 W. Bridge St
Hotchkiss, CO 81419
(970) 710-1840
Lic. #405R-00016.23



Heavy Metals by ICP-MS

Complete

Analyte	LOD	LOQ	Mass
	µg/g	µg/g	µg/g
Arsenic	0.002	0.02	ND
Cadmium	0.001	0.02	ND
Lead	0.002	0.02	ND
Mercury	0.012	0.05	ND

Date Tested: 10/26/2020
LOD = Limit of Detection
LOQ = Limit of Quantitation
ND = None Detected

Wes Rogers
Principal Scientist
10/29/2020

This product or substance has been tested by KCA Laboratories using validated testing methodologies and a quality system. Values reported relate only to the product or substance tested. KCA Laboratories makes no claims as to the efficacy, safety or other risks associated with any detected or non-detected amounts of any substances reported herein. This Certificate of Analysis shall not be reproduced except in full, without the written approval of KCA Laboratories.



KCA Laboratories
232 North Plaza Drive
Nicholasville, KY 40356

(833) 522-5227
https://kcalabs.com
KDA Lic.# P_0058

Certificate of Analysis

ZM10192020

Sample ID: 2010KCA0561.1760
Cultivar: N/A
Matrix: Concentrates & Extracts
Type: Other
Sample Size:

Received: 10/23/2020
Completed: 10/29/2020
Batch#: N/A

Client
Happy Buddha Hemp
112 W. Bridge St
Hotchkiss, CO 81419
(970) 710-1840
Lic. #405R-00016.23

Pesticides by LCMS/MS & GCMS/MS

Complete

Analyte	LOD	LOQ	Mass	Analyte	LOD	LOQ	Mass
	PPM	PPM	PPM		PPM	PPM	PPM
Abamectin	0.001	0.005	ND	Imidacloprid	0.001	0.005	ND
Acephate	0.001	0.005	ND	Metalaxyl	0.001	0.005	ND
Acetamiprid	0.001	0.005	ND	Methomyl	0.001	0.005	ND
Aldicarb	0.001	0.005	ND	Mevinphos	0.001	0.005	ND
Azoxystrobin	0.001	0.005	ND	Myclobutanil	0.001	0.005	ND
Bifenazate	0.001	0.005	ND	Oxamyl	0.001	0.005	ND
Carbaryl	0.001	0.005	ND	Paclbutrazol	0.001	0.005	ND
Carbofuran	0.001	0.005	ND	Pentachloronitrobenzene	0.001	0.005	ND
Chlorantraniliprole	0.001	0.005	ND	Phosmet	0.001	0.005	ND
Chlordane	0.001	0.005	ND	Piperonyl Butoxide	0.001	0.005	ND
Daminozide	0.001	0.005	ND	Propoxur	0.001	0.005	ND
Diazinon	0.001	0.005	ND	Pyridaben	0.001	0.005	ND
Dimethoate	0.001	0.005	ND	Spinetoram	0.001	0.005	ND
Ethoprophos	0.001	0.005	ND	Spinosad	0.001	0.005	ND
Etofenprox	0.001	0.005	ND	Spiromesifen	0.001	0.005	ND
Etoxazole	0.001	0.005	ND	Spirotetramat	0.001	0.005	ND
Fenoxycarb	0.001	0.005	ND	Spiroxamine	0.001	0.005	ND
Fenpyroximate	0.001	0.005	ND	Tebuconazole	0.001	0.005	ND
Fipronil	0.001	0.005	ND	Thiacloprid	0.001	0.005	ND
Flonicamid	0.001	0.005	ND	Thiamethoxam	0.001	0.005	ND
Fludioxonil	0.001	0.005	ND	Trifloxystrobin	0.001	0.005	ND
Imazalil	0.001	0.005	ND				

Date Tested: 10/26/2020
LOD = Limit of Detection
LOQ = Limit of Quantitation
ND = None Detected

Wes Rogers
Principal Scientist
10/29/2020

This product or substance has been tested by KCA Laboratories using validated testing methodologies and a quality system. Values reported relate only to the product or substance tested. KCA Laboratories makes no claims as to the efficacy, safety or other risks associated with any detected or non-detected amounts of any substances reported herein. This Certificate of Analysis shall not be reproduced except in full, without the written approval of KCA Laboratories.



KCA Laboratories
232 North Plaza Drive
Nicholasville, KY 40356

(833) 522-5227
https://kcalabs.com
KDA Lic.# P_0058

Certificate of Analysis

ZM10192020

Sample ID: 2010KCA0561.1760
Cultivar: N/A
Matrix: Concentrates & Extracts
Type: Other
Sample Size:

Received: 10/23/2020
Completed: 10/29/2020
Batch#: N/A

Client
Happy Buddha Hemp
112 W. Bridge St
Hotchkiss, CO 81419
(970) 710-1840
Lic. #405R-00016.23

Microbials by qPCR

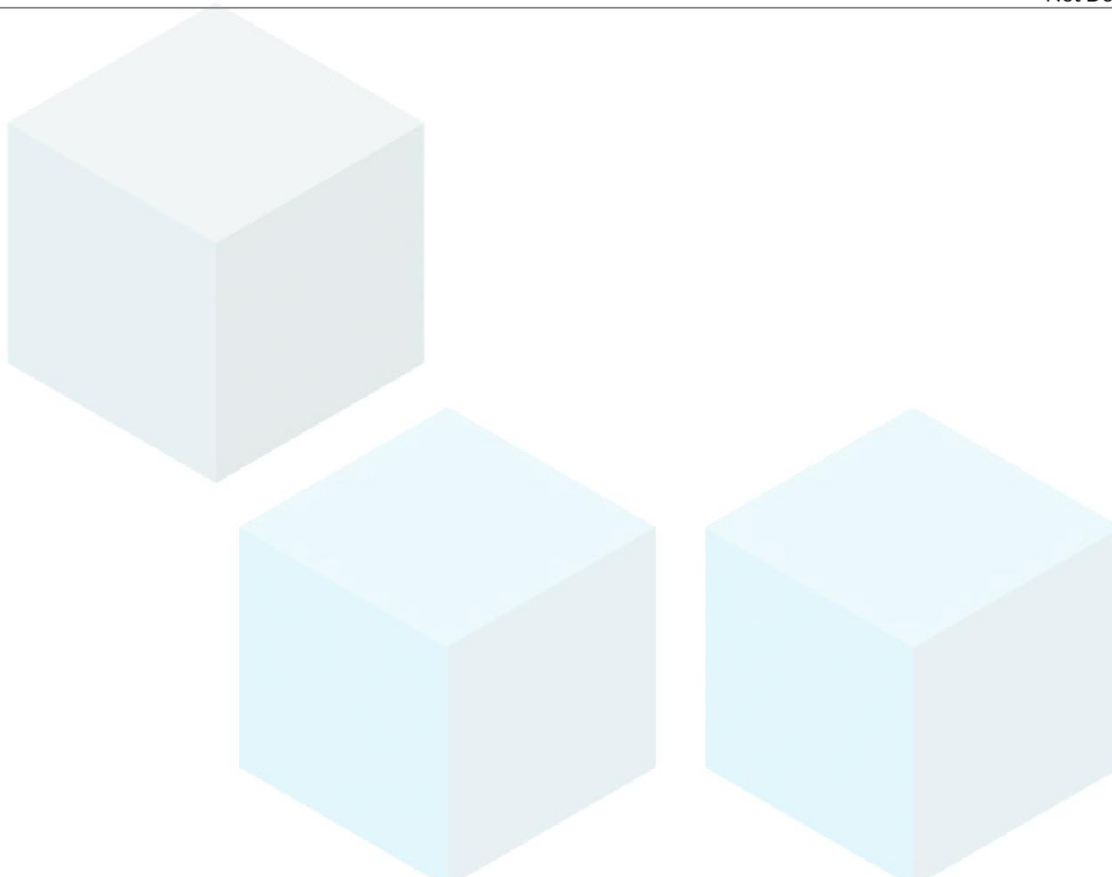
Complete

Analyte

Result

Aerobic Bacteria
Shiga toxin-producing E. Coli
Enterobacteriaceae
Salmonella

CFU/g
Not Detected in 1g
Not Detected in 1g
Not Detected in 1g
Not Detected in 1g



Date Tested: 10/29/2020

TNTC = Too Numerous to Count; Unless otherwise stated all quality control samples performed within specifications established by the Laboratory.

Wes Rogers
Principal Scientist
10/29/2020

This product or substance has been tested by KCA Laboratories using validated testing methodologies and a quality system. Values reported relate only to the product or substance tested. KCA Laboratories makes no claims as to the efficacy, safety or other risks associated with any detected or non-detected amounts of any substances reported herein. This Certificate of Analysis shall not be reproduced except in full, without the written approval of KCA Laboratories.



KCA Laboratories
232 North Plaza Drive
Nicholasville, KY 40356

(833) 522-5227
<https://kcalabs.com>
KDA Lic.# P_0058

Certificate of Analysis

ZM10192020

Sample ID: 2010KCA0561.1760
Cultivar: N/A
Matrix: Concentrates & Extracts
Type: Other
Sample Size:

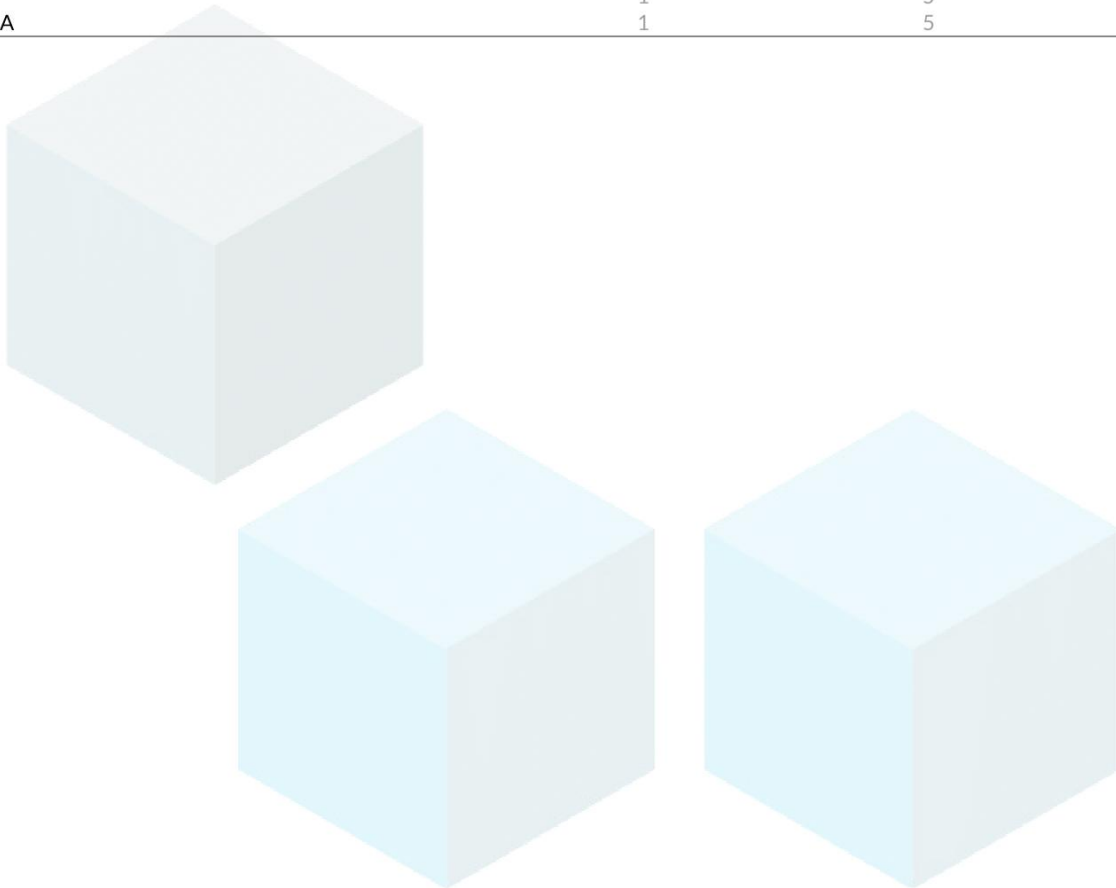
Received: 10/23/2020
Completed: 10/29/2020
Batch#: N/A

Client
Happy Buddha Hemp
112 W. Bridge St
Hotchkiss, CO 81419
(970) 710-1840
Lic. #405R-00016.23

Mycotoxins by LCMS/MS

Complete

Analyte	LOD PPB	LOQ PPB	Units PPB
B1	1	5	ND
B2	1	5	ND
G1	1	5	ND
G2	1	5	ND
Ochratoxin A	1	5	ND



Date Tested: 10/26/2020
LOD = Limit of Detection
LOQ = Limit of Quantitation
ND = None Detected

Wes Rogers
Principal Scientist
10/29/2020

This product or substance has been tested by KCA Laboratories using validated testing methodologies and a quality system. Values reported relate only to the product or substance tested. KCA Laboratories makes no claims as to the efficacy, safety or other risks associated with any detected or non-detected amounts of any substances reported herein. This Certificate of Analysis shall not be reproduced except in full, without the written approval of KCA Laboratories.